



# 2025 Improvement as Learning

Being the best at getting better

## Students will persevere at their point of challenge.

### Infused with our Learning Dispositions:

- We are Thinkers**
- We are Curious**
- We are Communicators
- We are Balanced
- We are Responsible
- We are Resilient**

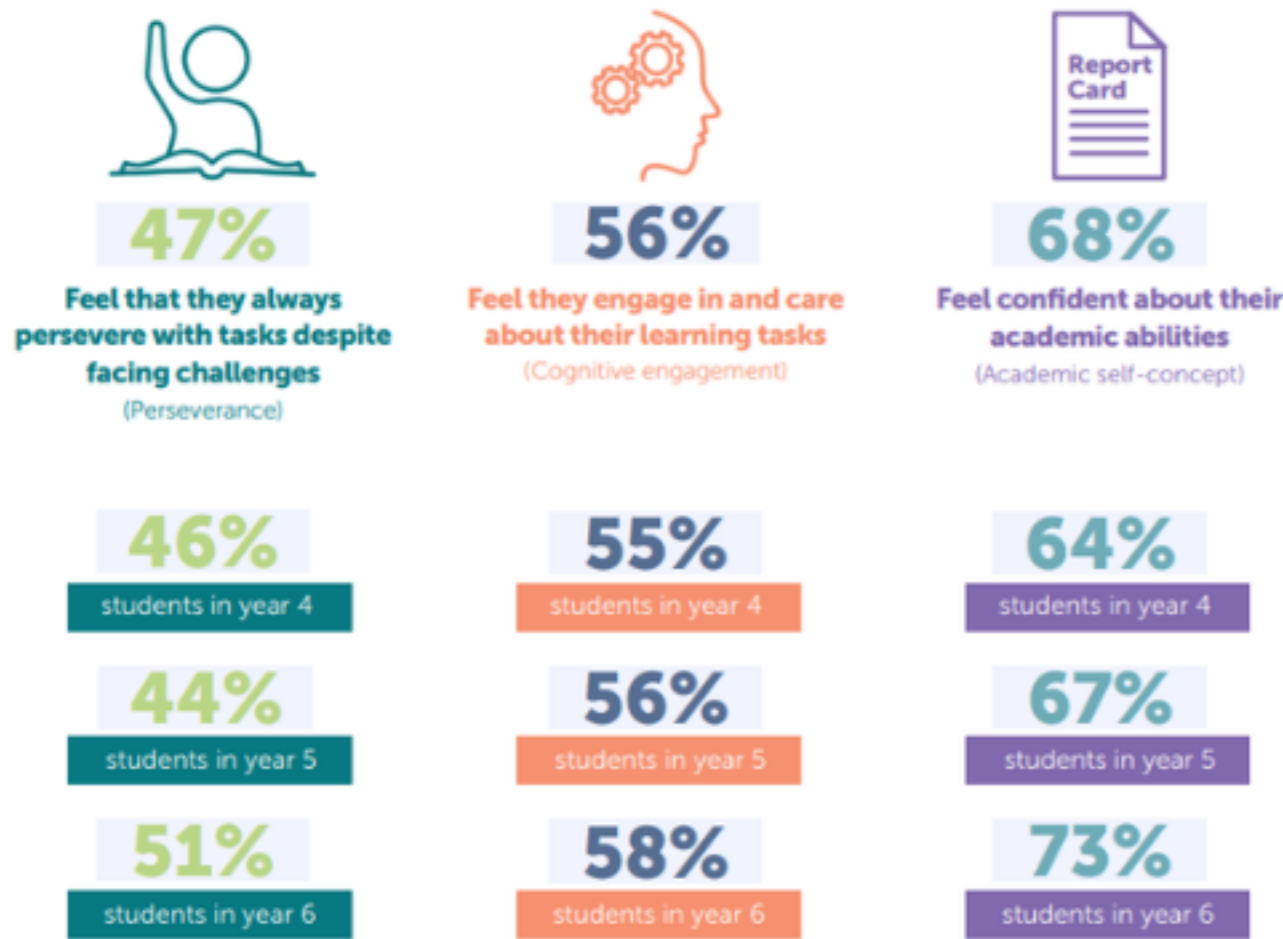
### Areas of Impact



## Where we are now ?

### WEC Data 2024

#### LEARNING READINESS



### 2024 NAPLAN

% of students in the 'Exceeding' proficiency band

	Numeracy	Reading	Writing	Spelling
Yr 3	8% ↑	18% ↑	5%	11%
Yr 5	11% ↑	20% ↑	12% ↑	23% ↑
Yr 7	11%	14%	18% ↑	18%

↑ denotes improvement from 2023 to 2024

## Maths Goal

Students will persevere to solve increasingly complex Mathematical problems.

## Inquiry into Practice

How might we use **thinking routines** to **scaffold** and **extend student thinking**?

## Our ways of working

We will prioritise time for PLTs to collaboratively design learning. We will be tight on purpose, commit to strengthen our areas of impact and trial different ways to achieve improvement.

Key Actions	Impact	Measures of Impact
Professional Learning <ul style="list-style-type: none"> <li>Ron Ritchhart</li> <li>SA Curriculum Portfolio Network</li> </ul> Collaborative Learning Design including common assessment processes Action research in PLTs Learning Walks & Talks (teachers & leaders)	We will notice students... <ul style="list-style-type: none"> <li>Asking questions</li> <li>Reflecting on thinking using Mathematical vocabulary</li> <li>Persevering to solve Mathematical problems</li> </ul>	Student progress monitoring-summative and formative. Street data - Friday Forums & student feedback processes Wellbeing and Engagement Collection Data: <i>Learning Readiness</i> NAPLAN data

Underpinned by our school values: **Respect** • **Inclusivity** • **Empathy** • **Excellence**